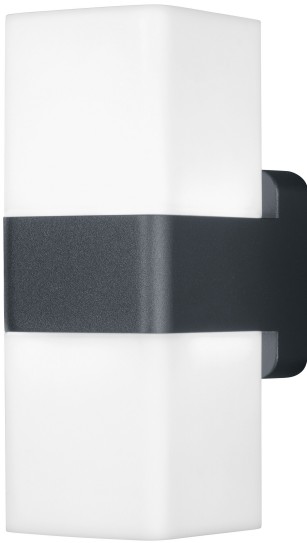


PRODUCT DATASHEET

SMART+ Wifi Cube UpDown RGB + W

SMART+ WIFI Cube Multicolor | Luminaires with WiFi technology



Areas of application

- General illumination
- Gardens
- Patios, balconies

Product benefits

- Easy and quick installation
- Colorful garden lighting with smart and intelligent control options
- Combines the functionality of general lighting and mood lighting

Product features

- Controllable via voice control available: Google Assistant or Amazon Alexa
- RGB color control, approx. 16 million color options adjustable
- Dimmable
- Color temperature: 3,000 K (Warm White)
- Network protocol: WiFi
- Type of protection: IP44
- Controllable via SMART+ App (with minimum Android 8.0 or iOS 14.0)



TECHNICAL DATA

Electrical data

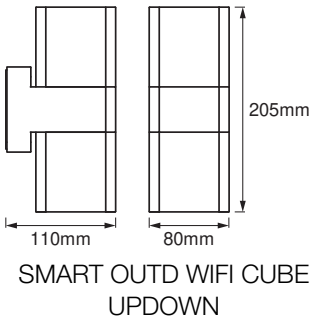
| | |
|------------------------|---------------|
| Nominal wattage | 14.00 W |
| Nominal voltage | 220...240 V |
| Mains frequency | 50...60 Hz |
| Nominal current | 96.000 mA |
| Power factor λ | > 0.5 |
| Protection class | I |
| Operating mode | Mains voltage |

Photometrical data

| | |
|--|----------|
| Luminous flux | 950 lm |
| Total luminous flux of contained light sources | 1200 lm |
| Luminous efficacy | 72 lm/W |
| Color temperature | 3000 K |
| Light color (designation) | RGBW |
| Color rendering index Ra | ≥80 |
| Standard deviation of color matching | < 6 sdcm |
| Photobiological safety group acc. to EN62778 | RG0 |
| Photobiological safety group acc. to EN62471 | RG0 |
| Beam angle | 315.00 ° |

Dimensions & Weight

| | |
|----------------|-----------|
| Length | 110.00 mm |
| Width | 80.00 mm |
| Height | 205.00 mm |
| Product weight | 630.00 g |



Materials & Colors

| | |
|--|--------------------|
| Product color | Dark gray |
| Housing color | Dark gray |
| Body material | Aluminum |
| Cover material | Polycarbonate (PC) |
| Glow Wire Test according to IEC 60695-2-12 | 650 °C |

Application & Mounting

| | |
|--|-----------------------------|
| Ambient temperature range | -20...+40 °C |
| Temperature range at storage | -20...+80 °C |
| Type of connection | Terminal, 3-Pole (L, N, PE) |
| Type of protection | IP44 |
| Protection class IK (shock resistance) | IK03 |
| Dimmable | Yes |
| Type of dimming | WiFi |
| Mounting type | Surface |
| Application environment | Outdoor |
| With light source | No |

Lifespan

| | |
|----------------------------|---------|
| Lifespan L70/B50 at 25 °C | 25000 h |
| Number of switching cycles | 12500 |

Certificates & Standards

| | |
|--|-----------|
| Standards | CE / UKCA |
| Luminaire with limited surface temperature, "D sign" | No |
| Ball shot safe | No |

Additional product data

| | |
|----------------|--|
| Product remark | Reset settings to default by switching the product on for three seconds and off for three seconds and repeating this five times. |
|----------------|--|








EQUIPMENT / ACCESSORIES

- Mounting screws and dowels included
- Control via app or voice control requires compatible Smart home system
- For control via SMART+ App, a smartphone or tablet is required (with minimum Android 8.0 or iOS 14.0)

Safety advice

- All electrical connections must be made by a qualified person.
- Caution, risk of electric shock.
- Product in protection class I. All electrically conductive, metallic housing parts that can absorb voltage during operation or during maintenance in the event of a fault must be continuously connected to the protective earthing conductor.

DOWNLOAD DATA

| Documents and certificates | | Document name |
|--|--|---|
|  | User instruction / safety instructions | G11219156 Smart Outdoor Wifi Cube Updown |
|  | Addon technical information | Wifi remote control compatibility list |
|  | Addon technical information | Wifi remote control compatibility list (DE) |
|  | Legal information | Safety insert G11222381 |
|  | Declarations of conformity | SMART OUTD WIFI CUBEUPDOWN RGBW |
|  | Declarations of conformity UKCA | SMART WIFI |
|  | EU Data Act | SMART WiFi Lamps and Luminaires |

LOGISTICAL DATA

| Product code | Packaging unit (Pieces/Unit) | Dimensions (length x width x height) | Gross weight | Volume |
|---------------|------------------------------|--------------------------------------|--------------|-----------------------|
| 4099854474859 | Folding box 1 | 87 mm x 212 mm x 124 mm | 813.00 g | 2.29 dm ³ |
| 4099854474866 | Shipping box 4 | 360 mm x 230 mm x 140 mm | 3250.00 g | 11.59 dm ³ |

The mentioned product code describes the smallest quantity unit which can be ordered. One shipping unit can contain one or more single products. When placing an order, for the quantity please enter single or multiples of a shipping unit.

References / Links

- Further information and frequently asked questions (FAQs) at www.ledvance.com/en-int/home-lighting/services/faq

DISCLAIMER

Subject to change without notice. Errors and omission excepted. Always make sure to use the most recent release.